

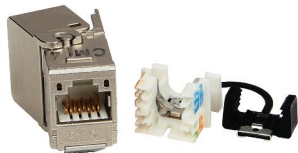
P | Cabling

C6Amodul / C6Amodul K

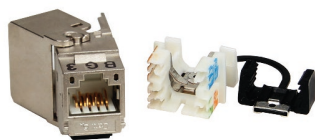
AWG 26/1 - 22/1, AWG 26/7 - 22/7

- (DE) Montagehinweis für den Installateur
- (EN) Mounting note for the installer
- (FR) Notice d'installation pour l'installateur

Modul
130B11-E 180°



Keystone
130B21-E 180°



- (DE) Weiterführende Informationen
- (EN) More Information
- (FR) Informations supplémentaires



i HINWEIS / NOTE / NOTICE

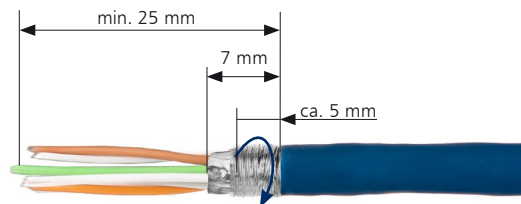
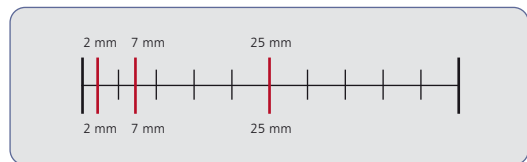


- (DE) Anschlussfehler vermeiden!
Vor dem Anschluss Montageanleitung sorgfältig lesen!
- (EN) Avoid connection errors!
Read installation instructions carefully before connecting!
- (FR) Eviter des erreurs de raccordement !
A lire attentivement avant de procéder au raccordement !



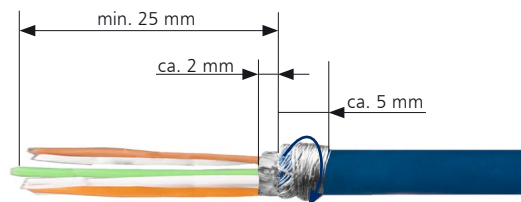
- (DE) Weiterführende Informationen
- (EN) More Information
- (FR) Informations supplémentaires

- (DE) Weiterführende Informationen
- (EN) More Information
- (FR) Informations supplémentaires



i HINWEIS / NOTE / NOTICE

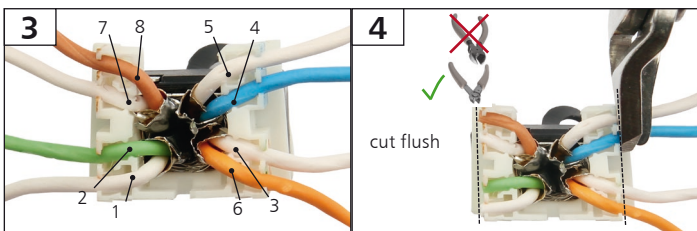
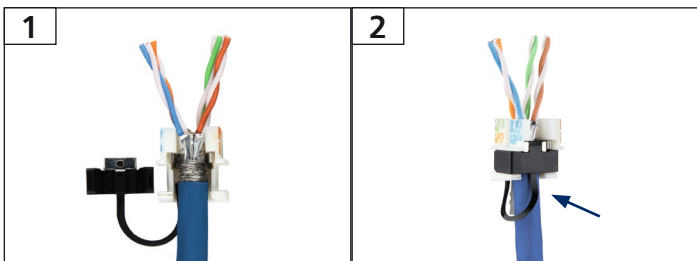
- (DE) Kabel AWG 22/23!
Folienschirm 7 mm stehen lassen.
Schirmgeflecht 5 mm über den Folienschirm drehen.
- (EN) Cable AWG 22/23!
Leave 7 mm of the foil shield. Wrap the braided shield 5 mm over the foil shield.
- (FR) Câble AWG 22/23 !
Laisser 7 mm du blindage en feuille. Enrouler le blindage tressé 5 mm autour du blindage en feuille.



i HINWEIS / NOTE / NOTICE

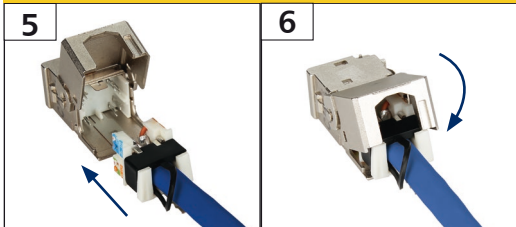
- (DE) Kabel AWG 26!
Schirmgeflecht 5 mm über den Kabelmantel aufbringen.
- (EN) Cable AWG 26!
Wrap the braided shield 5 mm over the cable sheath.
- (FR) Câble AWG 26 !
Enrouler le blindage tressé 5 mm autour du gainage.

- DE Kabelmontage T568A
- EN Cable termination T568A
- FR Installation d'un câble T568A

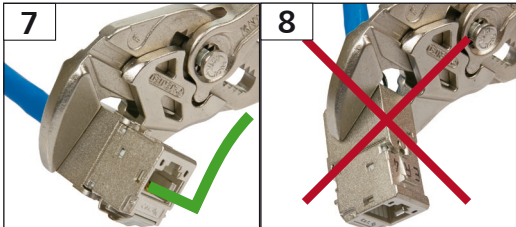


Anschlussbelegung PIN assignments Affectation des fils aux contacts			
PIN Nr. No. contact no.	T568A	T568B	Profinet
1	WH-GN	WH-OG	YE
2	GN	OG	OG
3	WH-OG	WH-GN	WH
4	BU	BU	-
5	WH-BU	WH-BU	-
6	OG	GN	BU
7	WH-BN	WH-BN	-
8	BN	BN	-

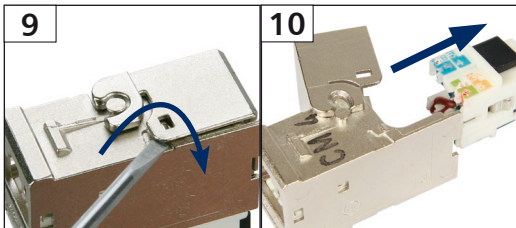
! Nicht schräg einstecken!
Do not plug diagonally!
Ne pas insérer en diagonale !



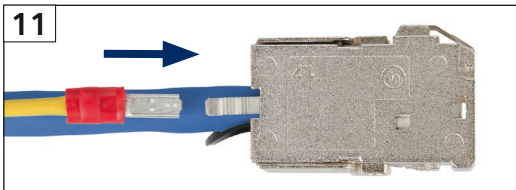
- DE Schließen des Moduls bei Verwendung von Werkzeug
- EN Closing the module by using a tool
- FR Fermeture du module en utilisant un outil



- DE Demontage
- EN Disassembly
- FR Démontage



- DE Potentialausgleich
- EN Potential equalisation
- FR Compensation de potentiel



Optionaler Potentialausgleich mit 2,8 mm Flachstecker
Optional potential equalisation with 2.8 mm flat plug
Compensation de potentiel optionnelle par languette à 2,8 mm