

P | Cabling

Kabelverbinder Class Ea
Cable connector Class Ea
Connecteur de câbles Classe Ea
AWG 26/1 - 22/1, AWG 26/7 - 22/7

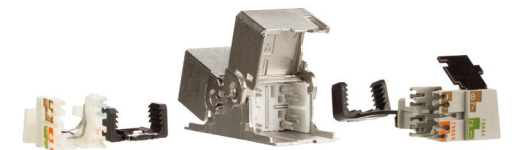
- (DE) Montagehinweis
- (EN) Mounting note
- (FR) Notice d'installation



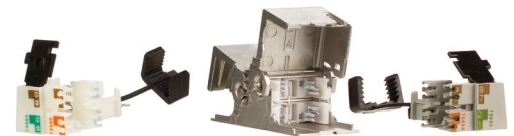
130863-04-E | 180°



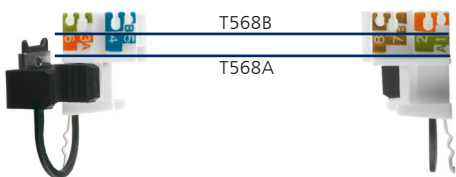
130863-05-E | 270°



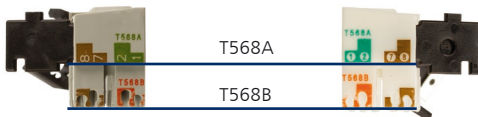
130863-06-E | 360°



(DE) gerade (EN) straight (FR) droit



(DE) gewinkelt (EN) angled (FR) coudée



1 (DE) Kabelkonfektion (EN) Cable preparation (FR) Préparation du câble

STRAIGHT
min. 25 mm
ca. 7 mm
5 mm

ANGLED
min. 35 mm
ca. 17 mm
5 mm

7 mm 17 mm 25 mm 35 mm
7 mm 17 mm 25 mm 35 mm

(DE) Lineal (EN) Ruler (FR) Règle

i HINWEIS / NOTE / NOTICE

(DE) **Kabel AWG 26!**
Folienschirm 5 mm kürzer abschneiden. Schirmgeflecht 5 mm über den Kabelmantel aufbringen.

(EN) **Cable AWG 26!**
Cut the foil shield 5 mm shorter. Wrap the braided shield 5 mm over the cable sheath.

(FR) **Câble AWG 26 !**
Raccourcir les feuillets de blindage de 5 mm. Enrouler la tresse de blindage 5 mm sur la gaine de câble.

Anschlussbelegung
PIN assignments
Affectation des fils aux contacts

PIN Nr. No. contact no.	T568A	T568B	Profinet
1	WH-GN	WH-OG	YE
2	GN	OG	OG
3	WH-OG	WH-GN	WH
4	BU	BU	-
5	WH-BU	WH-BU	-
6	OG	GN	BU
7	WH-BN	WH-BN	-
8	BN	BN	-

2 (DE) Gerades Ladestück für 180° & 270° (EN) Straight stuffer cap for 180° & 270° (FR) Chargeur droit pour 180° & 270°

see 1a

white stuffer cap

cut flush

click

see table / PIN assignments

see table / PIN assignments

cut flush

click

see table / PIN assignments

cut flush

click

(DE) Gewinkeltes Ladestück für 270° & 360° (EN) Angled stuffer cap for 270° & 360° (FR) Chargeur droit pour 270° & 360°

see 1b

white stuffer cap

cut flush

click

see table / PIN assignments

cut flush

click

see table / PIN assignments

cut flush

i HINWEIS / NOTE / NOTICE

(DE) Anschlussfehler vermeiden!
Vor dem Anschluss Montageanleitung sorgfältig lesen!

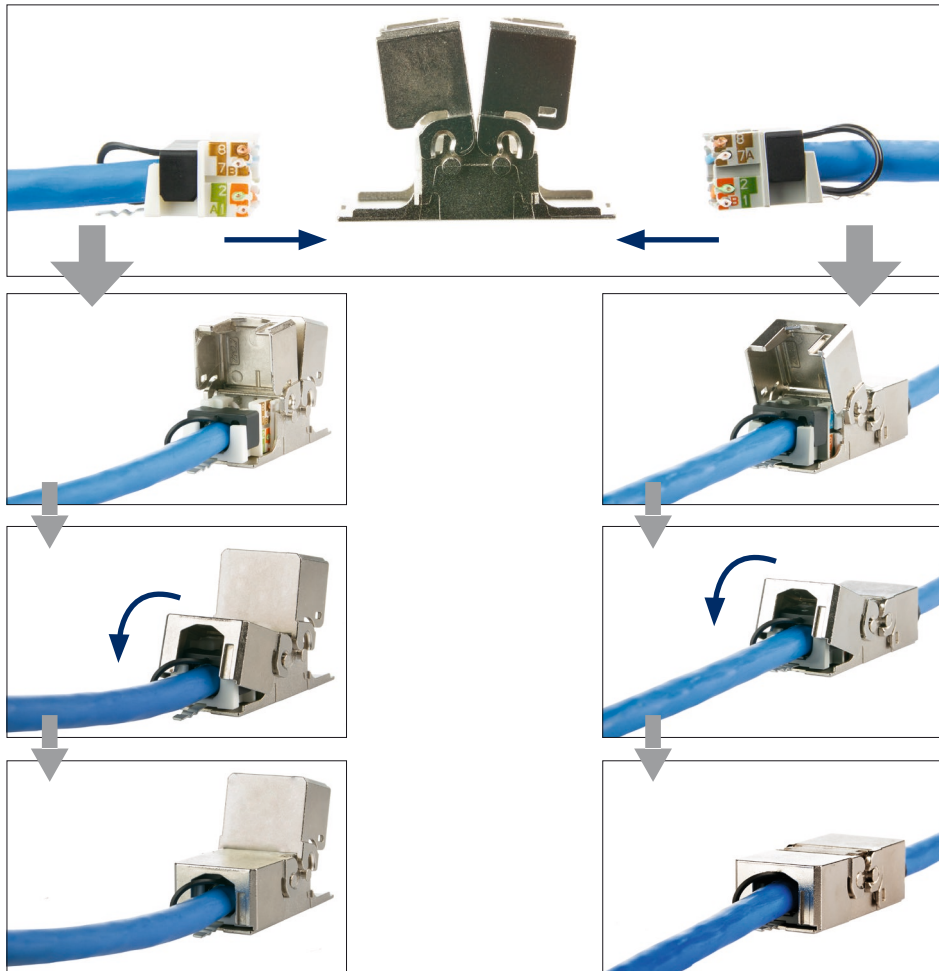
(EN) Avoid connection errors!
Read installation instructions carefully before connecting!

(FR) Eviter des erreurs de raccordement!
A lire attentivement avant de procéder au raccordement!

3

DE Anschluss Kabelverbinder EN Connection Cable connector

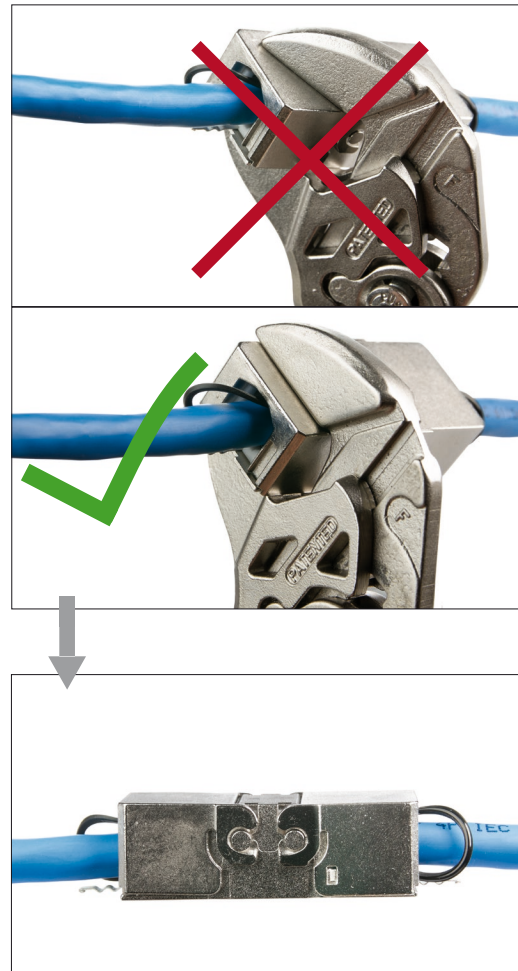
FR Raccordement Connecteur de câbles



DE Schließen bei Verwendung von Werkzeug

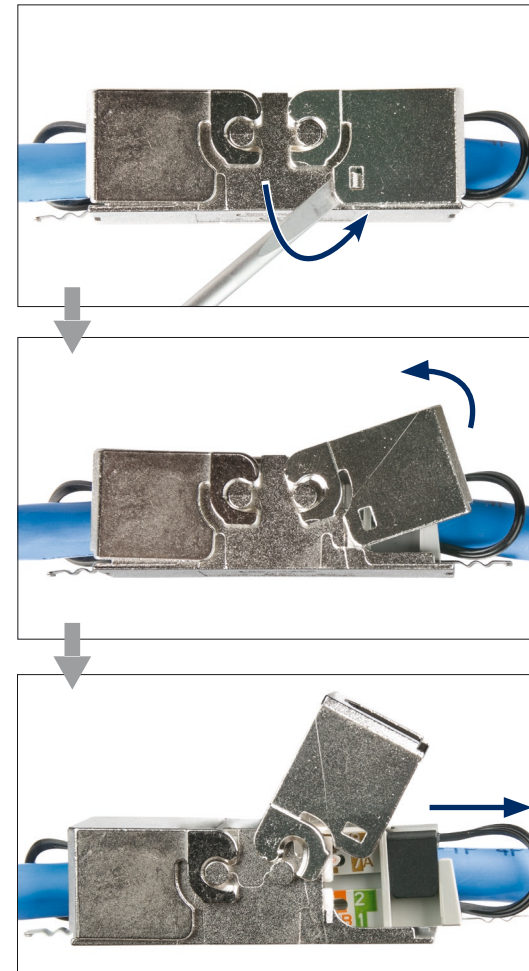
EN Closing by using a tool

FR Fermeture en utilisant un outil



Disassembly

DE Demontage FR Démontage



i HINWEIS / NOTE / NOTICE



de

Zusätzliche Informationen und Dokumentationen stehen zum Download unter www.metz-connect.com bereit.

en

Additional information and documentations are available at download at www.metz-connect.com

fr

Des informations et documentations supplémentaires disponibles pour téléchargement à www.metz-connect.com

130863-04-E | 180°



130863-05-E | 270°



130863-06-E | 360°

