

rotronic

Datenblatt - Fiche technique - Data sheet

19.06.1048



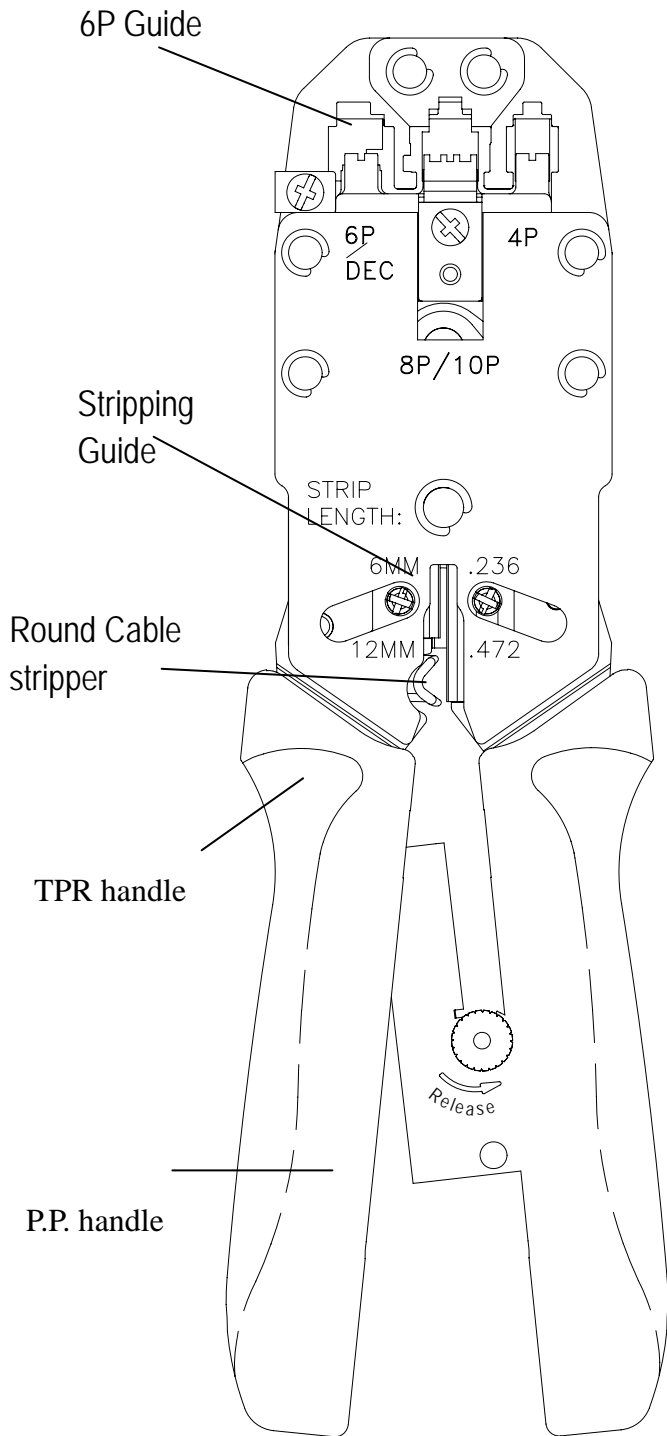
Universal Crimpzange für Modular Plugs,

Pince à sertir univ. pour fiches modulaires,

Universal Crimping Tool for Modular Plugs,

19.06.1048

Professional Modular Crimping Tool



Specification :

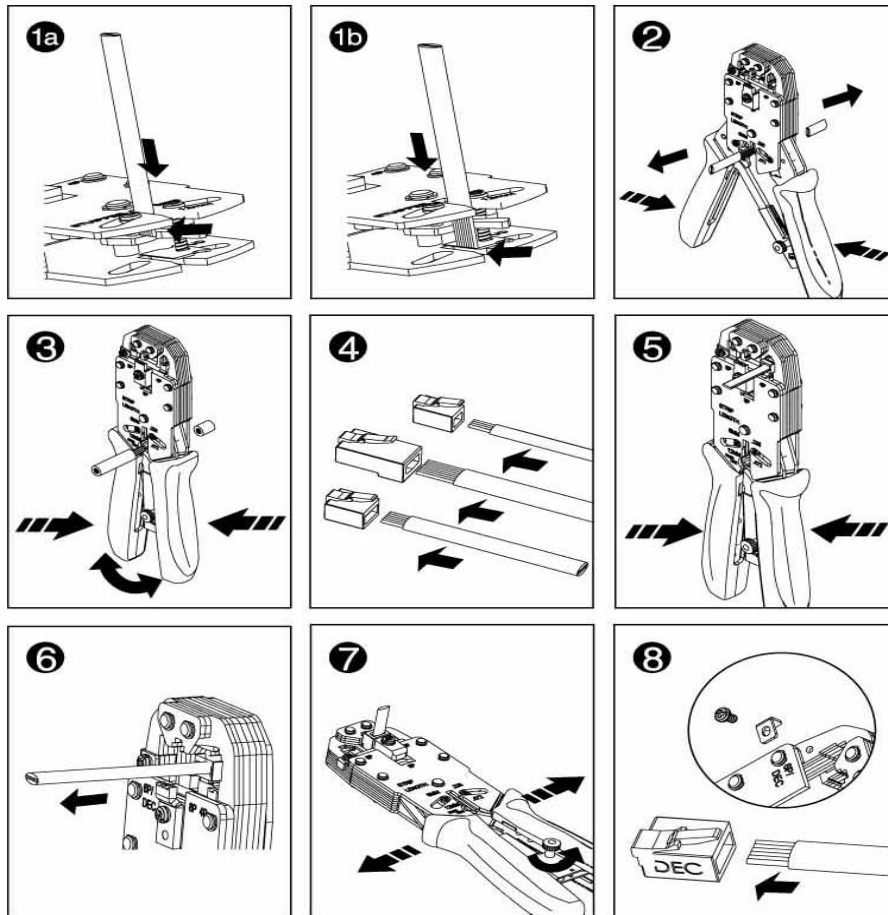
Item No.	Ratchet Type	For Crimping Modular Plug
19.06.1048	With Ratchet	8P8C/RJ45, 6P6C/RJ-12, 6P4C/RJ-11, 4P4C & 4P2C Plugs DEC/Off Set Plug-6P6C

- * **Length** : 8.3" (210±3mm)
- * **Weight** : 510g
- * **Material** : Frame-Made Of Middle Carbon Steel.
- * **Finished** : Black Oxide Finished And Hardened.

08/10/06
Jullie

19.06.1048 User Manual

Cuts, strips and crimps all kinds of modular plug without changing modular die set.



Instructions

Non-Ratchet Type: Remove the closed lock to open the handles.

Ratchet Type: Squeeze handles until it stops to open the handles.

1. Insert cable between stripper blades.
 - 1a. Insert 4P or 6P cable from the top end of the stripper block until it touches the stop guide (stripping length 6mm)
 - 1b. Insert 8P cable between stripper blades and let it extend a little past the lower cutter blade.
2. Squeeze handles, cable must be kept perpendicular and then pull from the tool.
3. Round cable stripping:
Insert round cable between the round cable stripper blades, squeeze handles and rotate cable and handles.
4. Remove the outer jacket insert the stripped cable into the plug make sure the left wire at one end matches the right wire at the other end.
5. Place modular plug with cable into the tool's holder. Make sure the stripped wire is between the tab and gold contacts. Squeeze handles until it stops.
6. Remove the crimped plug from the tool.
7. During the crimping process, you may turn the screw on the ratchet in counterclockwise direction to stop the incorrect operation. (RATCHET RELEASED)
8. To crimp "DEC" plug, follow step 1 to step 3.
Remove the screw on the left side of the 6P holder, insert the "DEC" plug and cable into the 6P holder and squeeze handles till it stops.