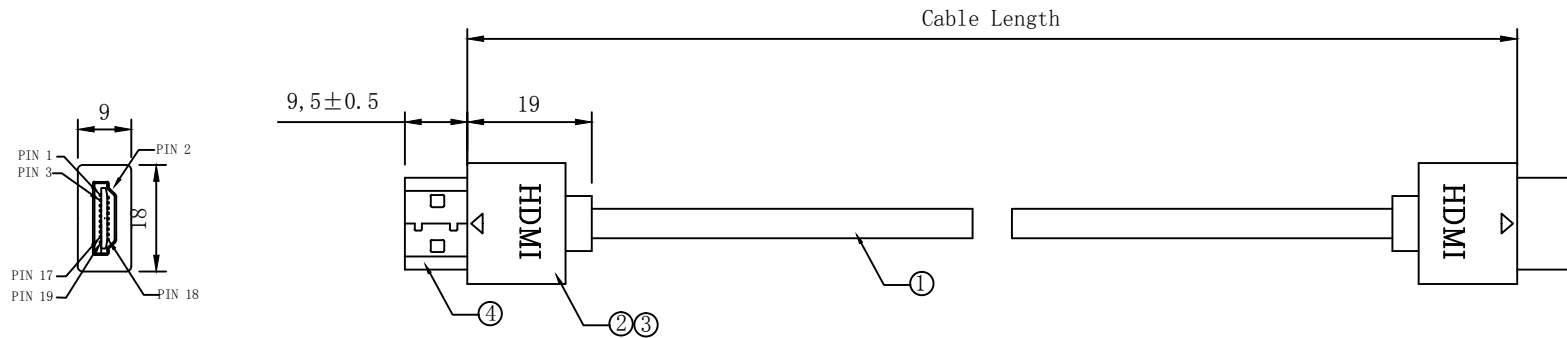
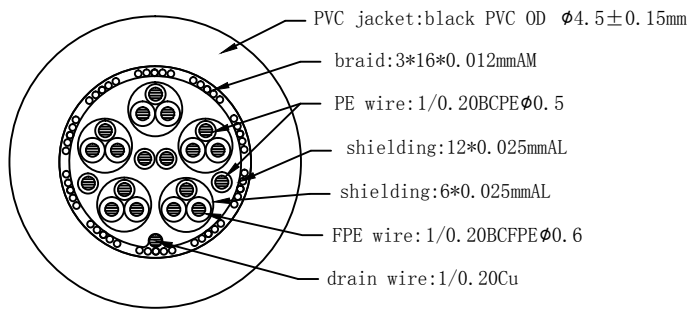


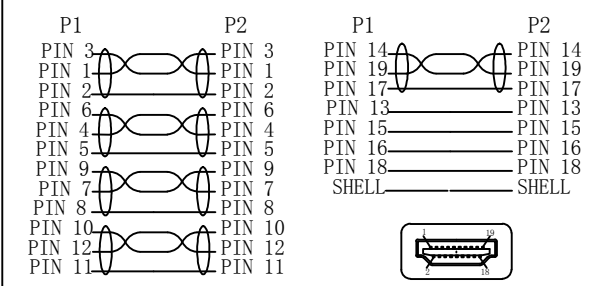
REV.	DESCRIPTION	DATE
A		2017-02-09
B		



Cable Specifications:



Pin Assignment



PART NO.	CABLE LENGTH
11.04.5591	1M
11.04.5592	2M
11.04.5593	3M
11.04.5594	5M

BOM LIST	
NO.	SPECIFICATIONS
1	HDMI 32AWG (1/0.20Cu*1P+1/0.20Cu+AL)*5+1/0.20Cu*4C+AL+D1/0.20Cu+PVC
2	Black zinc alloy shell A
3	clear PE inner molding
4	HDMI 19 Pin connector, gold plated

ROLINE Notebook HDMI High Speed Cable with Ethernet, A-A, M/M				DRAWER	YU
				CHECKED	
MATERIAL				APPROVED	
				REV.	A
DRAWING NO:					
				SECOMP	