

# rotronic

Datenblatt - Fiche technique - Data sheet

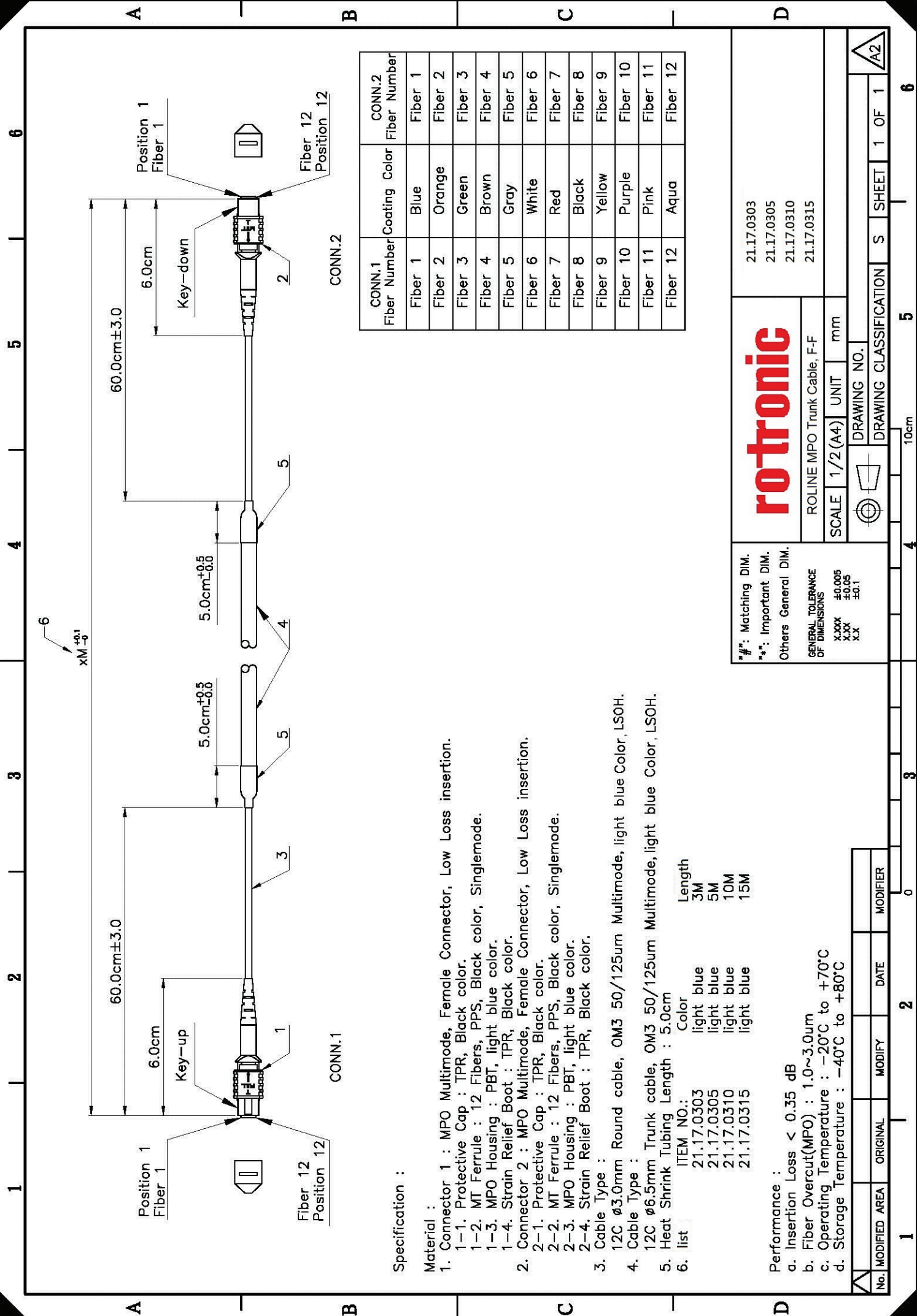
21.17.0305



**ROLINE MPO-Trunk-Kabel 50/125µm OM3,  
MPO/MPO, türkis, 5m**

**ROLINE Câble MPO Trunk 50/125µm OM3,  
MPO / MPO, turquoise, 5m**

**ROLINE MPO Trunk Cable 50/125µm OM3,  
MPO/MPO, turquoise, 5m**



CONN.1 Fiber Number	Coating Color	CONN.2 Fiber Number
Fiber 1	Blue	Fiber 1
Fiber 2	Orange	Fiber 2
Fiber 3	Green	Fiber 3
Fiber 4	Brown	Fiber 4
Fiber 5	Gray	Fiber 5
Fiber 6	White	Fiber 6
Fiber 7	Red	Fiber 7
Fiber 8	Black	Fiber 8
Fiber 9	Yellow	Fiber 9
Fiber 10	Purple	Fiber 10
Fiber 11	Pink	Fiber 11
Fiber 12	Aqua	Fiber 12

**Specification :**

**Material :**

- Connector 1 : MPO Multimode, Female Connector, Low Loss insertion.
  - 1-1. Protective Cap : TPR, Black color.
  - 1-2. MT Ferrule : 12 Fibers, PPS, Black color, Singlemode.
  - 1-3. MPO Housing : PBT, light blue color.
  - 1-4. Strain Relief Boot : TPR, Black color.
- Connector 2 : MPO Multimode, Female Connector, Low Loss insertion.
  - 2-1. Protective Cap : TPR, Black color.
  - 2-2. MT Ferrule : 12 Fibers, PPS, Black color, Singlemode.
  - 2-3. MPO Housing : PBT, light blue color.
  - 2-4. Strain Relief Boot : TPR, Black color.
- Cable Type :
 

12C $\phi$ 3.0mm Round cable, OM3 50/125um Multimode, light blue Color, LSOH.	Length
21.17.0303	3M
21.17.0305	5M
21.17.0310	10M
21.17.0315	15M
- Cable Type :
- 12C  $\phi$ 6.5mm Trunk cable, OM3 50/125um Multimode, light blue Color, LSOH.
- Heat Shrink Tubing Length : 5.0cm
- list

ITEM NO.:	Color	Length
21.17.0303	light blue	3M
21.17.0305	light blue	5M
21.17.0310	light blue	10M
21.17.0315	light blue	15M

**Performance :**

- Insertion Loss < 0.35 dB
- Fiber Overcut(MPO) : 1.0~3.0um
- Operating Temperature : -20°C to +70°C
- Storage Temperature : -40°C to +80°C

**rotronic**

ROLINE MPO Trunk Cable, F-F  
SCALE 1/2(A4) UNIT mm

21.17.0303  
21.17.0305  
21.17.0310  
21.17.0315

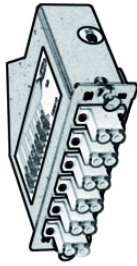
\*#: Matching DIM.  
\*\*: Important DIM.  
Others General DIM.  
GENERAL TOLERANCE OF DIMENSIONS  
XXX ±0.005  
XX ±0.05  
X ±0.1

No.	MODIFIED AREA	ORIGINAL	MODIFY	DATE	MODIFIER
1				2	0
DRAWING CLASSIFICATION					S
DRAWING NO.					5
SHEET					1 OF 1
10cm					6

**OM3 LC-LC  
(A-B)**



**MPO Module  
(12x LC-MPO male)**



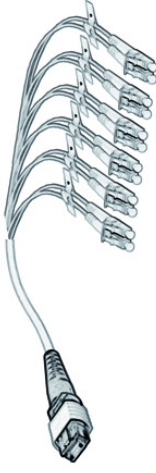
**MPO Trunk Cable  
(female-female)**



**MPO Coupler**



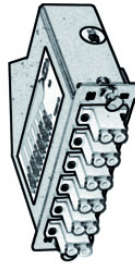
**MPO Fan-Out Cable  
(MPO male-12x LC)**



**OM3 LC-LC  
(A-B)**



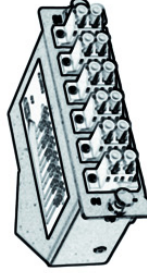
**MPO Module  
(12x LC-MPO male)**



**MPO Trunk Cable  
(female-female)**



**MPO Module  
(MPO male-12x LC)**



**OM3 LC-LC  
(A-A)**

